

SoftCMS

100/200/500-channel central management software designed for large scale surveillance systems



- > Up to 500 channels in one system
- > TV wall function supported via client-server connection
- > H.264/MPEG4/MJPEG viewing with VPort series
- > Access video-playback from MxNVR-IA8 / SoftNVR-IA
- > Triple monitor display capability
- > Emap function supported
- > PTZ control function supported
- > Supports remote web client access for live video and playback
- > Supports joystick controller

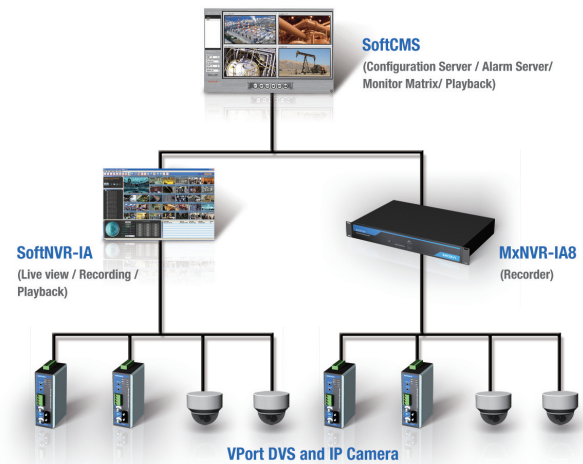
Introduction

SoftCMS is a powerful central management software solution that manages large scale CCTV installations in a single interface. This software supports live video monitoring, video playback, emap, remote

I/O trigger, and event management and is compatible with Moxa VPort series encoders, IP cameras, SoftNVR-IA, and MxNVR-IA8.

System Structure

- Flexible system design for centralized or distributed architecture
- 100, 200, or 500-channel licenses for different surveillance system scales.



Live View

- Supports 1, 4, 9, 16 split and carousel mode display
- Support video streams: MJPEG, MPEG4 and H.264 (only support the VPort models, but not include VPort 2000 series and VPort 3310)
- Camera tree display and channel group setting for quick selection
- Complete remote PTZ control
- Auto-scan function to monitor large channel numbers at the same time



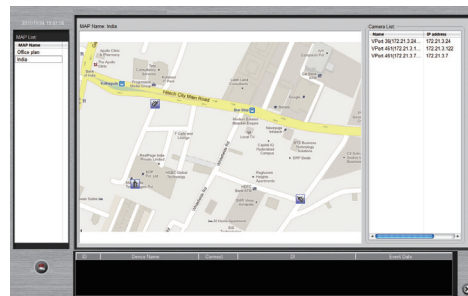
Video Playback

- Find desired video clip easily by device/time/date/event search
- Quick playback by double clicking on event search result
- Full screen display in playback interface
- Video wall view for critical live video monitoring
- Directly download remote video file in .avi file format



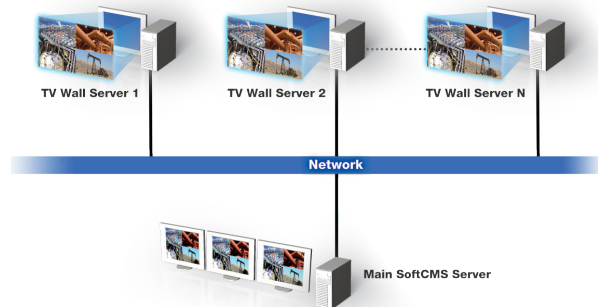
Emap

- Layered architecture, support unlimited map numbers
- Map tree display for easy map organization
- One-click access to camera live view
- Multi-angle camera icon to match real installation
- Alert camera icon for instant alarm notification



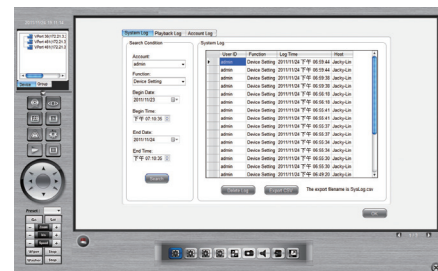
Matrix TV Wall

- Unlimited physical monitors can be installed
- Display unlimited number of live channel views with guaranteed frame rate
- Use large TV-wall environment for live monitoring



Operation Facilitator

- Intuitive graphic user interface
- 2-way audio
- Remote I/O control
- Vital signs monitoring
- Area/location categorization
- Detailed system record to keep an eye on your operator



Recommended System Requirements

- Intel Core i5-2400 CPU @ 3.10GHz (4 CPUs) or above
- 4 GB RAM or above
- Windows XP with SP3, Windows 7
- Motherboard: Intel chipset recommended
- Display card: ATI Radeon 9200, nVIDIA GeForce GT220, or above (dual monitors require 2 outputs); 1 GB DDR3 recommended

Ordering Information

Available Models

- SoftCMS-100:** IP CCTV central management software with 100-channel license
- SoftCMS-200:** IP CCTV central management software with 200-channel license
- SoftCMS-500:** IP CCTV central management software with 500-channel license

Package Checklist

- SoftCMS CD (includes the SoftCMS software and related documents)
- Key Pro (plugs into the USB port)
- Quick installation guide (printed)